

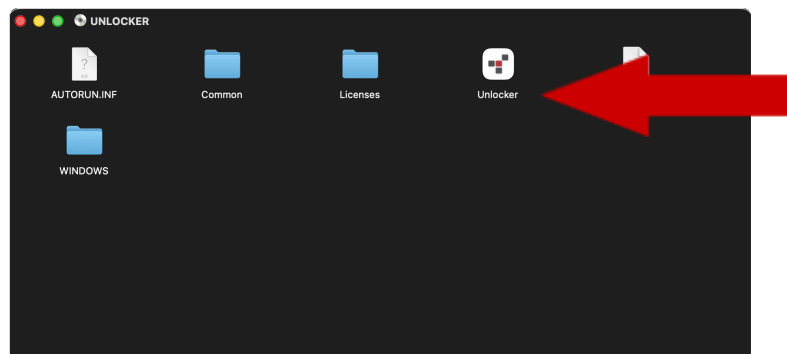
QUICK START GUIDE 1-2-3 MacOS

DataLocker DL450 FE - Encrypted External Hard Drive

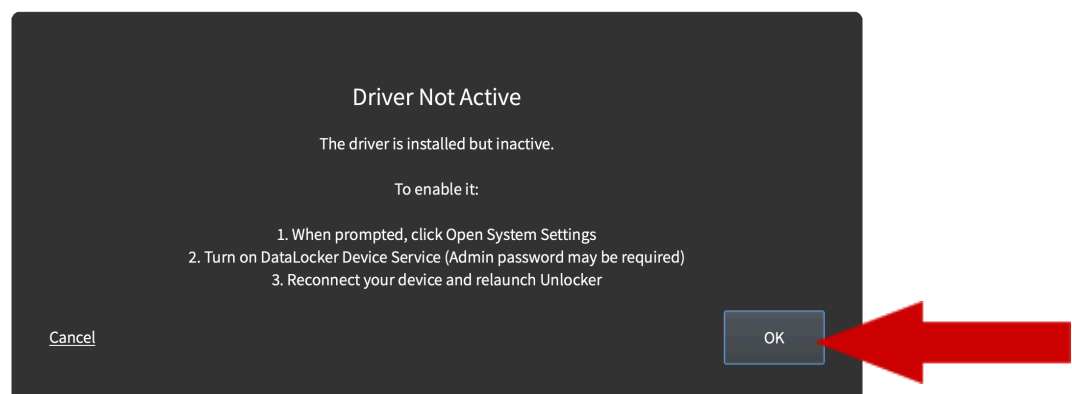
1. Double click on the Unlocker icon that appears on your Desktop.



2. Double click on the Unlocker Application (Do not click on the .exe as it would not run on a Mac OS machine.)

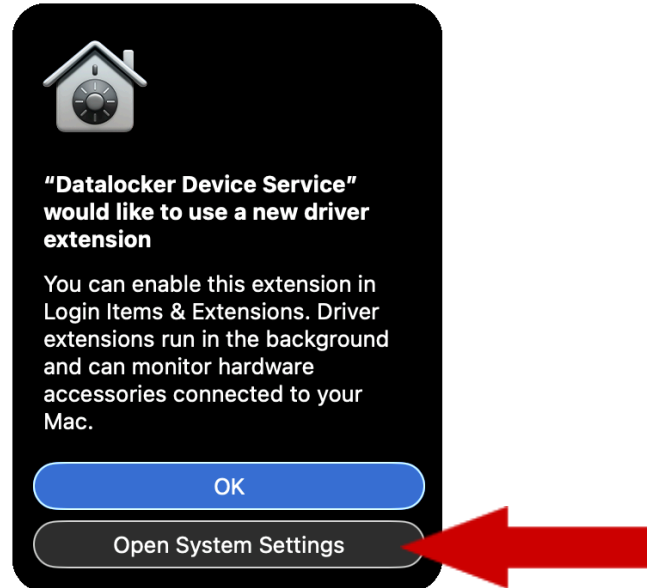


3. When you connect the device for the first time on your Mac machine, the pop up below will appear. You are required to install the driver for this device (one time) on the machine.

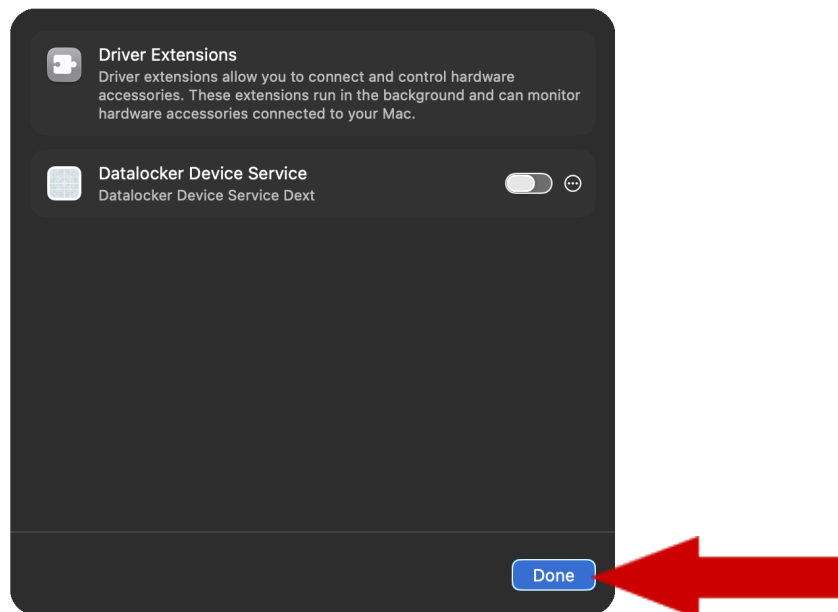


a. **Click on the "OK" button.**

- b. Click on the “Open System Settings” button.
**IMPORTANT: DO NOT ignore or Click OK.



- c. Enable the “Datalocker Device Service” by toggling to the right.
d. Click “Done”.



- 4. Unlock** with Unlocker.app and start working with your data. The encryption is automatic.