

# Installation guide - Allway Sync 'n' Go for SafeConsoleReady Devices using SafeConsole

## Table of Contents

[Introduction](#)

[Prerequisites](#)

[What is Allway Sync 'n' Go?](#)

[Allway Sync 'n' Go licensing](#)

[Using Allway Sync 'n' Go with SafeConsole](#)

[Installing Allway Sync 'n' Go through SafeConsole](#)

[Restoring data from backup](#)

[Updating Allway Sync 'n' Go through SafeConsole](#)

[Deactivating/Uninstalling Allway Sync 'n' Go through SafeConsole](#)

## Introduction

This guide will provide instructions on how to utilize the SafeConsole features Publisher and Authorized Autorun to install the Allway Sync onto SafeConsoleReady devices such as Sentry 3.0, Sentry 3 FIPS and DataLocker DL3 for backup purposes. This guide does not cover all the functionality of Allway and any support related questions in regards to the Allway product need to be directed to Allway. Allway Sync 'n' Go is a powerful tool that has many features which allows you to customize the experience to your requirements. The guidance we provide in this guide are provided as is and you are responsible for the implementation. This guide may contain errors, in which case DataLocker is in no part liable. That being said the solution is really nice and will impress you with the value that it offers. You will probably be able to extend upon the knowledge in this guide and solve things you never thought possible.

Allway Sync can also be used to download or synchronize additional folders, this is not covered in this manual.

Allway Sync can send encrypted backups over SFTP or to Amazon S3 or Google Cloud Storage and more. In this guide we will backup to an FTP account.

This guide can be completed in 20 minutes and requires a high level of computer skills.



## Prerequisites

- One or more SafeConsoleReady Devices (4.8.x) managed by SafeConsole (5.x)
- Admin access to SafeConsole to change policies.
- Ability to set up a network share.
- The devices need to be able to connect to the network share for the device software to download contents onto the devices.
- Allway Sync 'n' Go runs on any Windows 2000/XP/2003/Vista/2008/7/8/8.1/2012 R2/10 computer.
- Allway Sync needs approximately 22MB of space on the flash drive.
- Download Allway Sync 'n' Go: <https://allwaysync.com/download/>

## What is Allway Sync 'n' Go?

Allway Sync 'n' Go is a portable edition of Allway Sync to install on USB sticks and external HDDs. This version is well suited to run on SafeConsoleReady Devices.

Allway Sync uses innovative synchronization algorithms to synchronize your data between desktop PCs, laptops, USB drives, remote FTP/SFTP and WebDAV servers, various online data storages and more. Data compression and encryption are supported.

## Allway Sync 'n' Go licensing

Allway Sync 'n' Go is available in a free version for non-profit organizations and private persons.

Allway Sync Free has certain limitations and these limitations may change over time without notice. Currently, the limitations may not allow customers to process more than 40,000 files in any consecutive 30-days.

For professional use Allway Sync 'n' Go must always be licensed, however Allway allows 30-days free usage for trial purposes: <https://allwaysync.com/business>

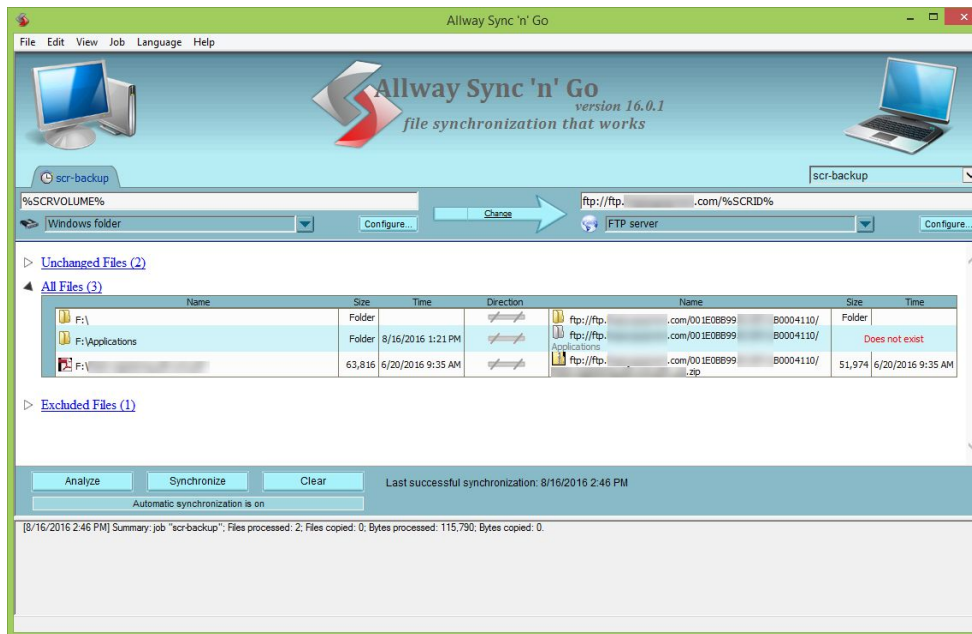
Please refer to license agreement for full terms.  
<https://allwaysync.com/license>

*Allway Sync is a registered trademark of Botkind, Inc.*

## Using Allway Sync 'n' Go with SafeConsole

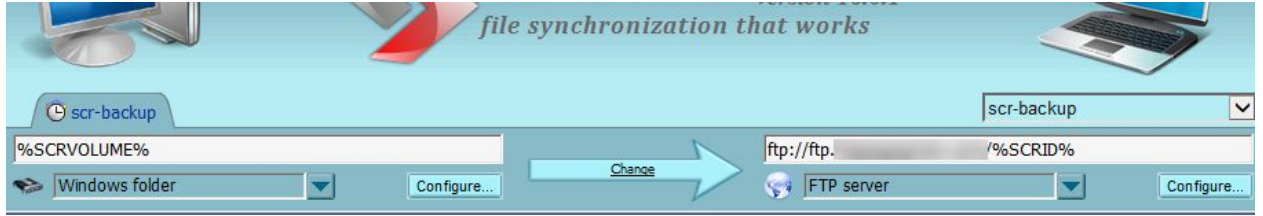
- Using SafeConsole the Allway Sync 'n' Go is deployed and runs automatically in the background on each unlock of the SafeConsoleReady Device.

- Allway Sync 'n' Go automatically performs backups in the background.
- Allway Sync 'n' Go automatically syncs any new content that is added during the session.
- Allway Sync 'n' Go can also be invoked by the user to backup the device at any time.
- The user can utilize their device like they would normally and can unplug the device without closing the Allway Sync 'n' Go application before locking or unplugging the device.
- Allway Sync 'n' Go deployed with Publisher will be automatically whitelisted against the any active file restriction policy that can be set in SafeConsole.



## Installing Allway Sync 'n' Go through SafeConsole




1. We start with preparing the package we want to publish to our device.  
Download Allway Sync 'n' Go:  
<http://allwaysync.com/content/download/allwaysync-n-go.exe>
  - a. Install Allway Sync 'n' Go to a SafeConsoleReady Device and setup your sync Job settings. Once setup you will publish this installation onto your managed devices using Publisher. Refer to the help in the application by pushing F1. It provides great details into how to setup a job.
  - b. Using parameters from SafeConsole we will customize the installation for each individual device. The parameters we are using are  
%SCRVOLUME% to find the encrypted storage partition and  
%SCRID% to create a unique folder in the backup location.



- c. In the above example the Allway Sync 'n' Go will find the device at H:/ partition on the current machine and then encrypt and sync up to our FTP, placing the contents in a folder based on the serial number of the device.



## Index of /

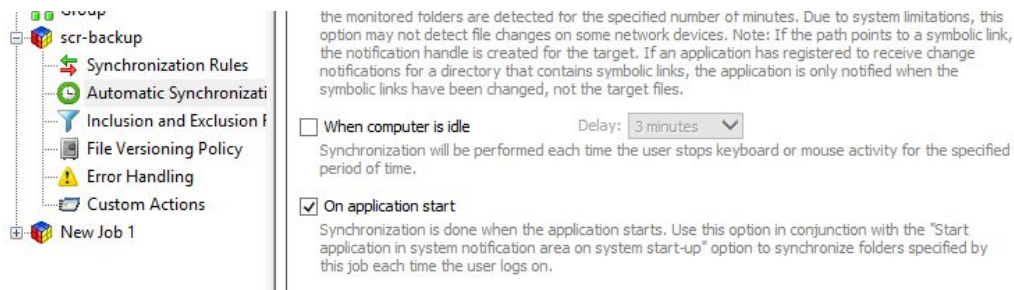
	Name	Size	Date Modified
	.ftpquota	13 B	8/16/16, 1:22:00 PM
	001E F31B0004110/		8/16/16, 1:22:00 PM
	0700 15C232/		8/16/16, 1:11:00 PM

- d. In our setup:

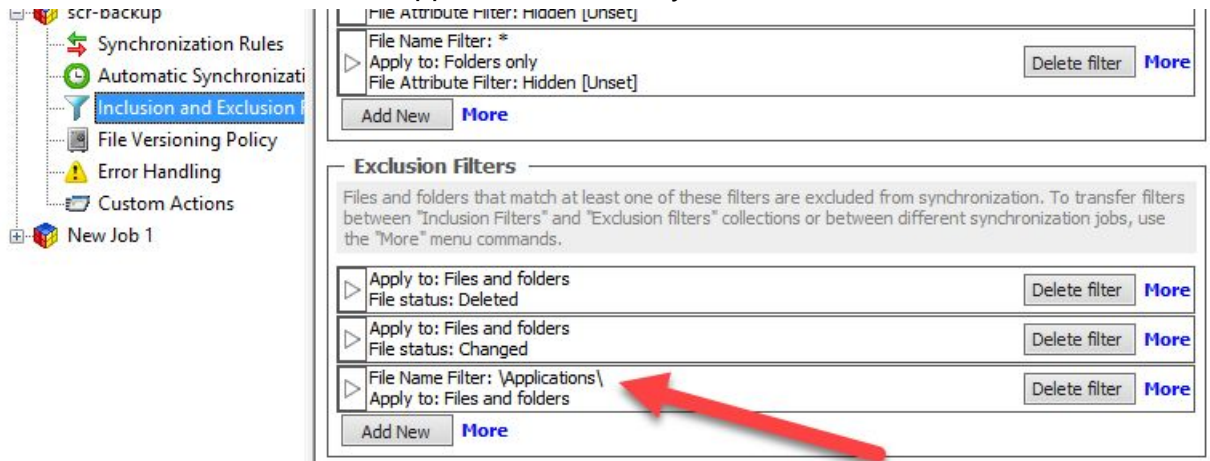
- We made the sync one-direction, from USB to the FTP. We did not propagate deletions or modifications.



- We sync on each start. These settings can be found under *Jobs>Properties* in the Allway Sync 'n' Go application.



● We excluded the /Applications directory on the device.

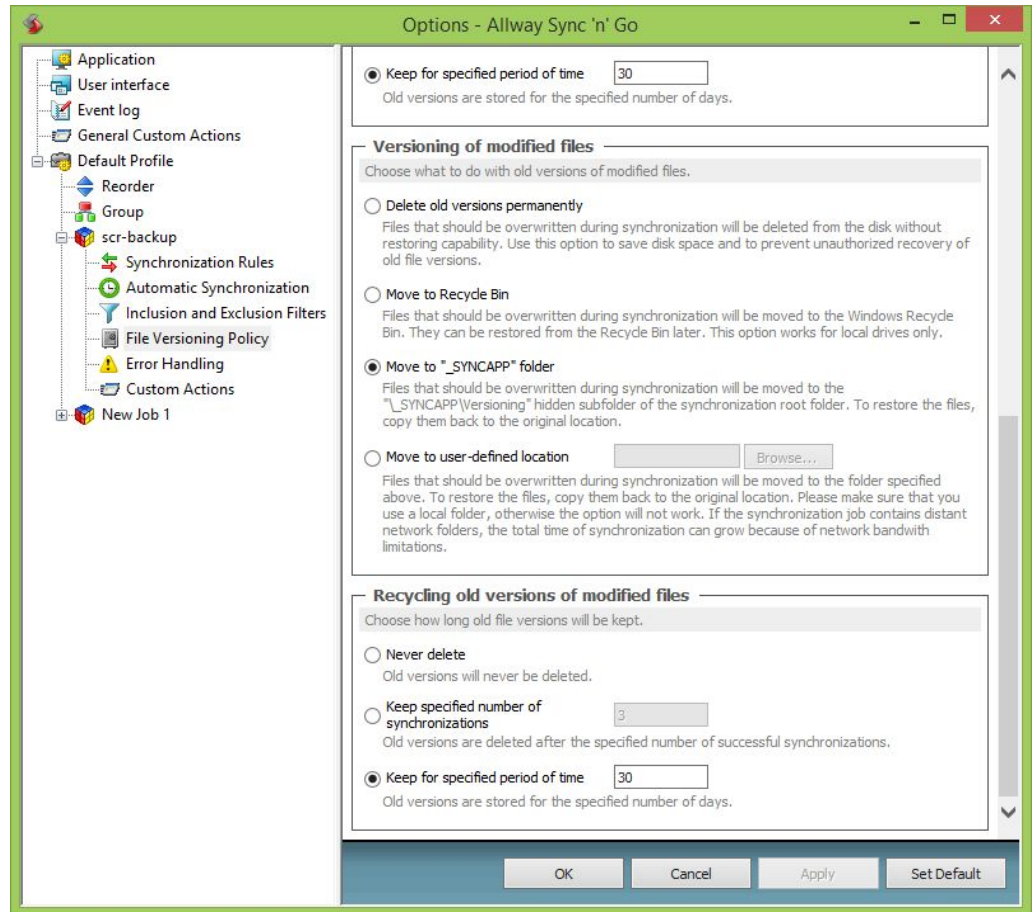


The screenshot displays the 'Inclusion and Exclusion' configuration window for a synchronization job. The left sidebar shows the job name 'scr-backup' and various settings categories, with 'Inclusion and Exclusion' selected. The main area shows a list of filters:

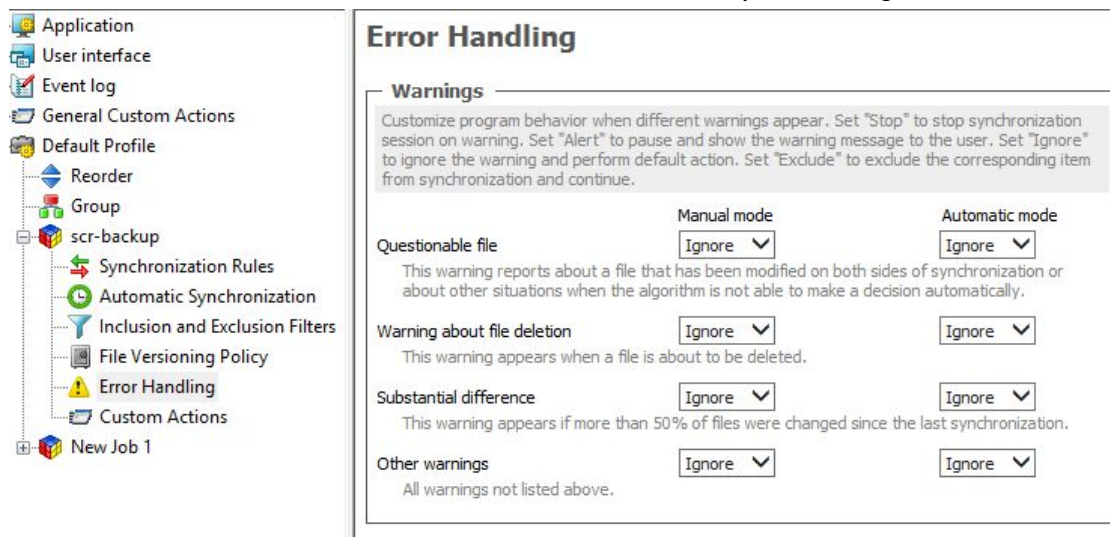
- File Attribute Filter: Hidden [Unset]
- File Name Filter: \*  
Apply to: Folders only  
File Attribute Filter: Hidden [Unset]
- File Name Filter: \Applications\  
Apply to: Files and folders

A red arrow points to the third filter, 'File Name Filter: \Applications\'', indicating that this directory is excluded from synchronization.

- We decided to only keep file versions for 30 days to not overload our FTP server.



- We decided to not alert the user on errors to avoid disruptive dialogues.



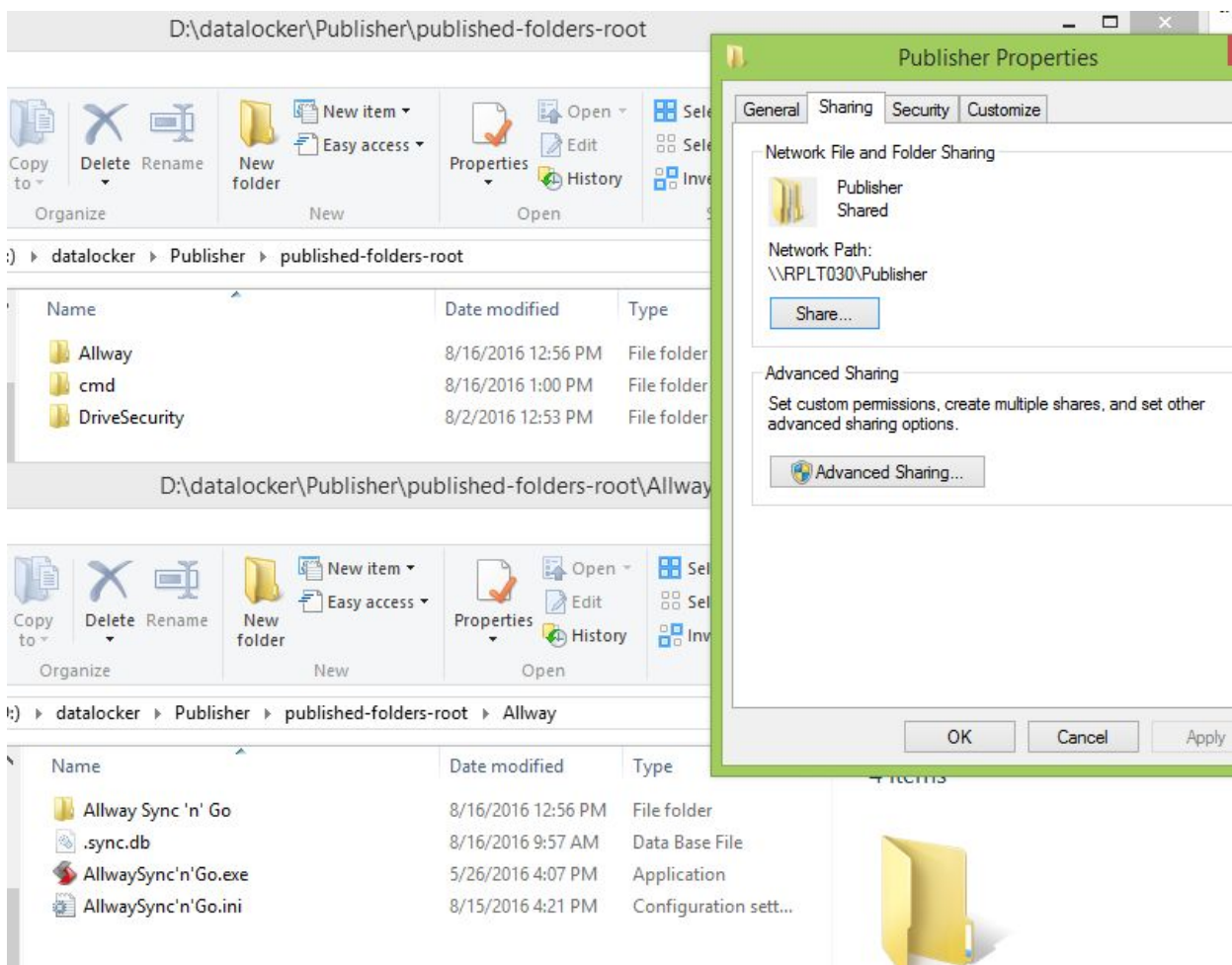
- We decided to encrypt and compress all files before being transferred to the FTP. We reach this dialogue by clicking configure on the destination folder.

Save the password in a secure location as it is required to recover files. Ensure that the right people have access to the password.



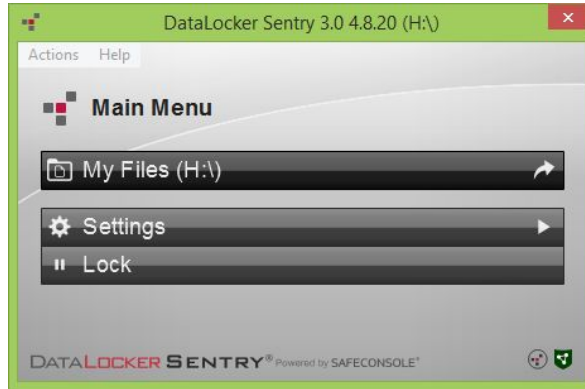
- Test to synchronize to ensure that you have the full flow working. When doing this you will need to take out the %SCRID% and %SCRVOLUME% and replace does with actual data as we have not inserted the parameters yet.
  - Once you have a functional Job setup make sure to put the %SCRID% and %SCRVOLUME% parameters back and save your job.
2. Now we will create our Publisher network share and place the Allway Sync 'n' Go installation there. **Make sure to create a root folder in the network share.**
- a. Create a folder named *Publisher*.
  - b. Right-click the new folder *Publisher* and select Properties.
  - c. Click the *Sharing* tab and then click the *Share..* Button.
  - d. Provide users that has devices you which to publish files to with Read permissions.
  - e. Now inside the *Publisher* folder create a subfolder named *published-folders-root*.
  - f. Create a folder named Allway.
  - g. Place the installation of *Allway Sync 'n' Go* in the new *Allway* folder



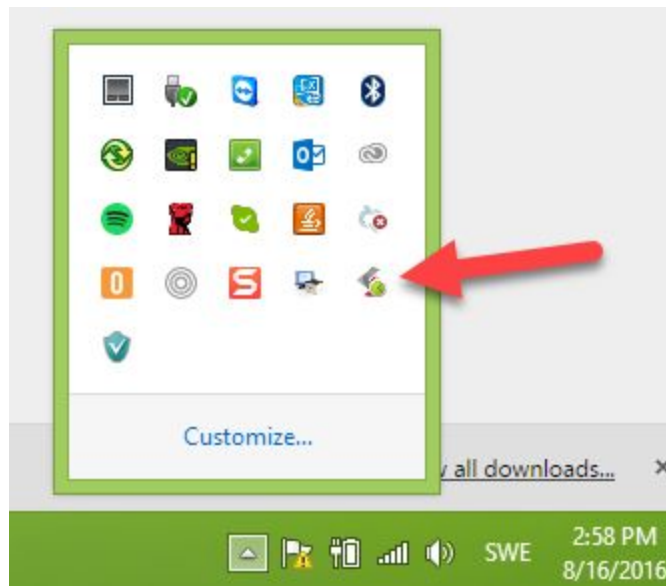


3. Optionally you may hide the Allway Sync 'n' Go from the user Main Menu in the device software of the SafeConsoleReady Device software. If you want your users to be able click in the Main Menu to access the Allway Sync 'n' Go interface you can skip this step.
  - a. To hide Allway Sync 'n' Go from the user Main Menu you must create a file named `safestick.ini` (note the extension must be `*.ini`). In the ini-file you enter the following command and then save the file in the Allway Sync 'n' Go folder:

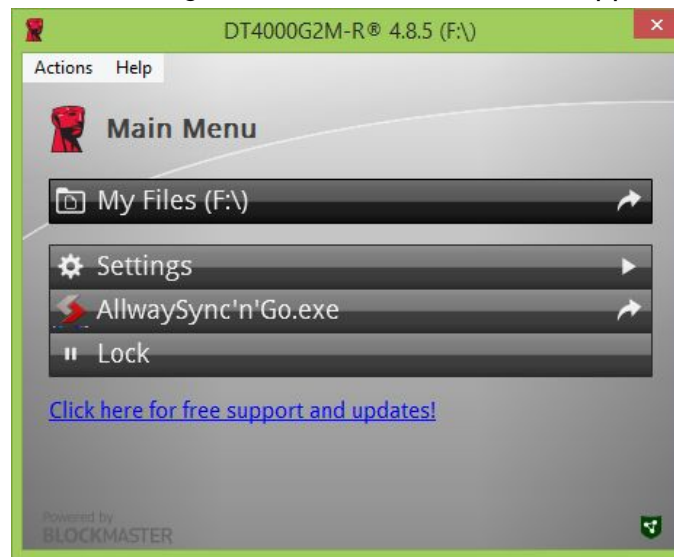
```
[starter]
hidden=yes
```



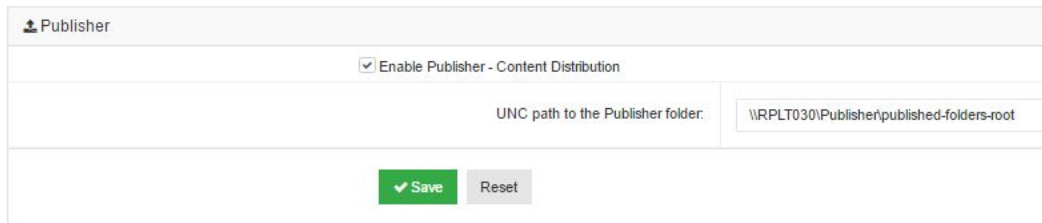
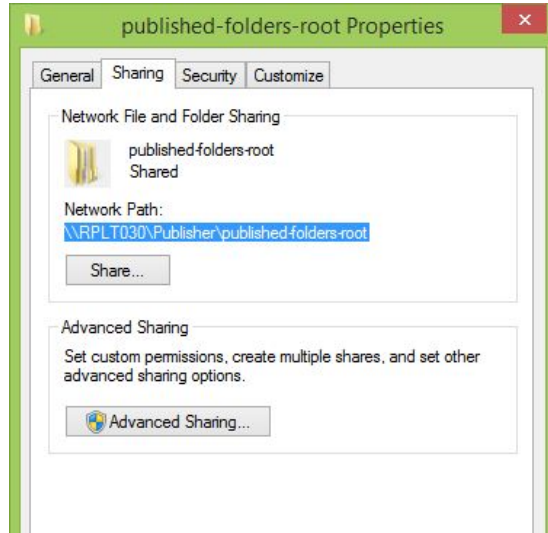
With or without the Allway Sync 'n' Go hidden in the Main Menu the user can still locate the Allway Sync 'n' Go in the tray menu by left clicking Allway logo.



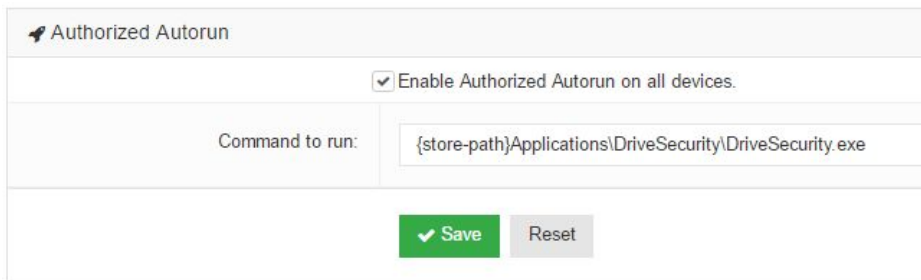
- b. Without hiding the software this will be the appearance.



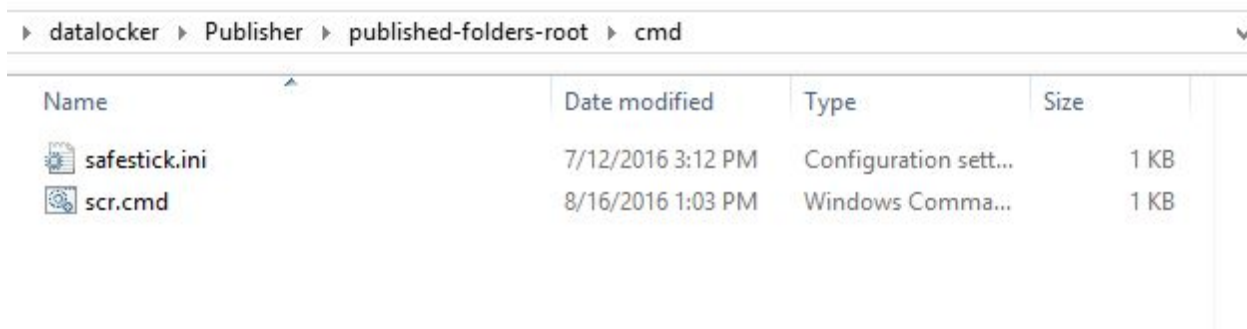
4. Now it is time to setup the Policies in SafeConsole. Please log on to your SafeConsole.
5. Go to Policies and under Publisher enter the UNC path to the *published-folders-root* directory. Note that your computer name will be different than the screenshots. We suggest that you copy paste the network path from the Properties of the *published-folders-root* and then click Save in the SafeConsole interface.





6. Still in SafeConsole under *Policies* click the *General* side tab and scroll to the Authorized Autorun policy. Enter: `{store-path}/Applications/cmd/scr.cmd` `{serial} {store-path}` and then click Save. This way the device software will be actioned to send the serial of the device and the store path of the Encrypted storage partition to the Allway Sync 'n' Go software.



The *command to run* is the location on the SafeConsoleReady device where we will publish a batch file that will be published. This will make it possible to automatically execute commands with parameters once the cmd file and Allway Sync 'n' Go has been published.



Name	Date modified	Type	Size
 safestick.ini	7/12/2016 3:12 PM	Configuration sett...	1 KB
 scr.cmd	8/16/2016 1:03 PM	Windows Comma...	1 KB

We have placed a safestick.ini in the cmd folder, as in the above instructions, to hide the batch file from the user main menu.

7. Now we will create the scr.cmd file. Using notepad we enter:

```
SET SCRID=%1 && SET SCROLUME=%2
```

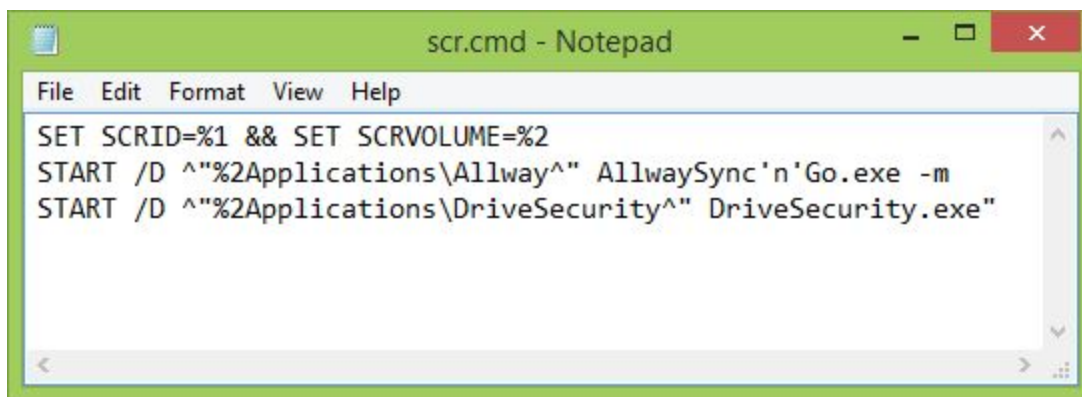
This line fetches the serial of the device and storage path from the authorized autorun command.

```
START /D ^"%2Applications\Allway^" AllwaySync'n'Go.exe -m
```

This line starts the Allway application. The -m parameter means that the application starts as minimized. Refer to Allsync help and support for more parameters.

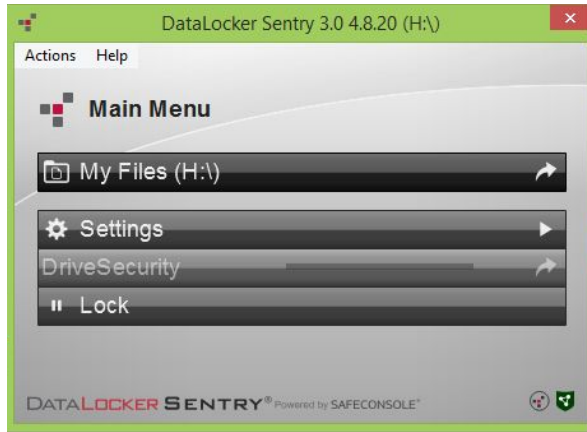
```
START /D ^"%2Applications\DriveSecurity^" DriveSecurity.exe"
```

This last line is to demonstrate that we also can run additional applications from this batch file. This line can be excluded.

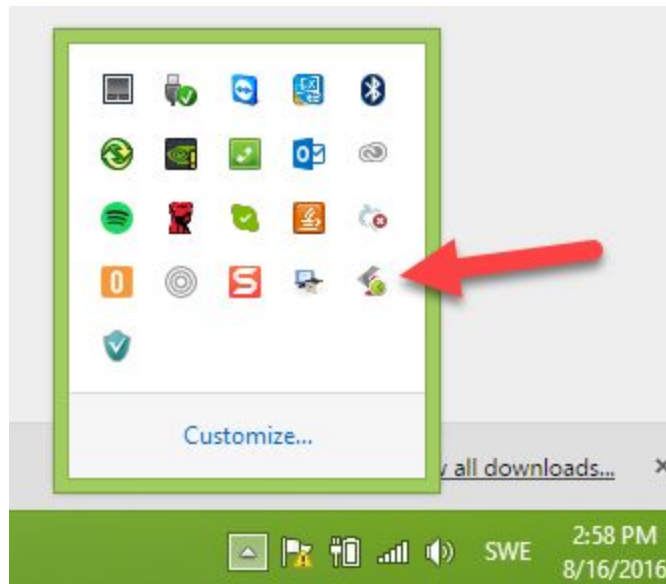


8. Now insert a freshly reset SafeConsoleReady device into a computer that can access the network share.

9. Connect the device to SafeConsole and complete the device setup and then unlock.
10. Your files will be published to the device. This will be visible in the Main Menu, here DriveSecurity is being published. Apps that are set to autorun will not run after the install, but will do so on all unlocks that follow.

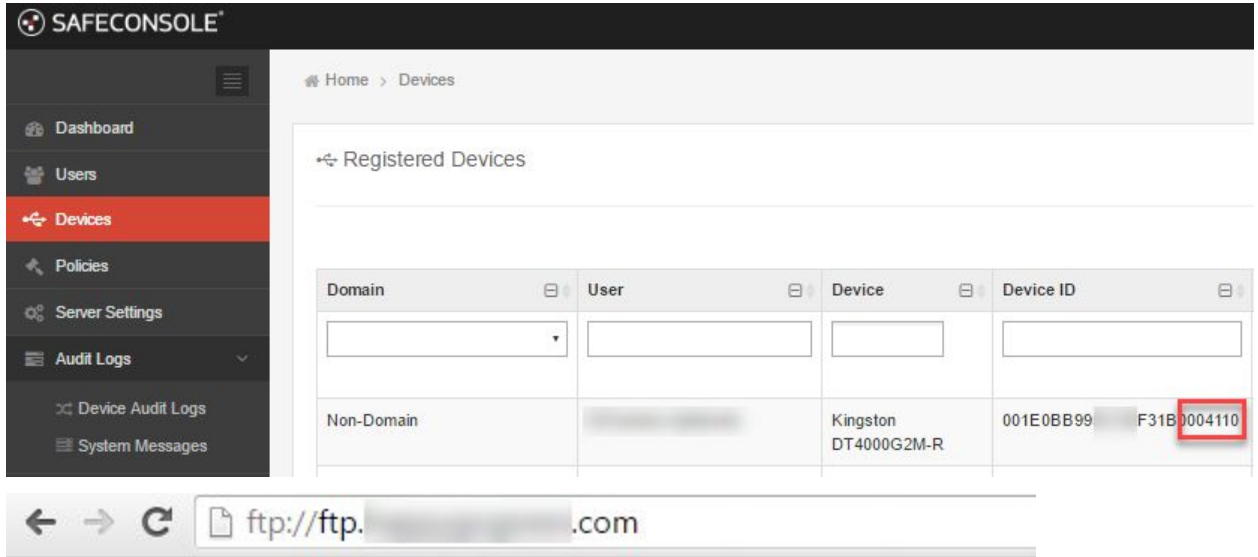


11. Lock your device and then unlock it again. Allway Sync 'n' Go will now be running in the background. You installation is complete. Verify by left clicking the icon in the system tray.



## Restoring data from backup

- In our case we used FTP as the backup destination. If you have another destination such as Amazon S3 you will need to adjust the guide to your purpose.
- We used the serial number as the folder name in the backup destination.
- By finding the Device ID in the Devices section we can then find the correct backup folder.



SAFECONSOLE<sup>™</sup>




Home > Devices

Registered Devices

Domain	User	Device	Device ID
Non-Domain		Kingston DT4000G2M-R	001E0BB99-F31B0004110

ftp://ftp. ....com

## Index of /

Name	Size	Date Modified
 .ftpquota	13 B	8/16/16, 1:22:00 PM
 001E0BB99-F31B0004110/		8/16/16, 1:22:00 PM
 0700071049AC9F15C232/		8/16/16, 1:11:00 PM

- Download the files and unzip and decrypt them with the encryption password. These files can now be sent to the user or be used for forensics.

## Updating Allway Sync 'n' Go through SafeConsole

- Download the new package and unzip.
- Take a backup copy of your current *published-folders-root*  
Remove the old *Allway* folder.  
Place the new installation folder in the *Allway* folder.
- Verify that the *safestick.ini* is in place in the new *Allway* folder if you are using this option. You can verify from your backup copy if you are. If needed copy the backup *safestick.ini* into the new *Allway* folder.



## Deactivating/Uninstalling Allway Sync 'n' Go through SafeConsole

- Remove or unclick *Enable* the Authorized Autorun command in SafeConsole under *Policies* under the *General* tab. Click save.
- Remove the *Allway* folder from the *published-folders-root*.
- If you want to make sure that all traces of the app is removed from a device you will need to reset the device. You can also ask you users to delete the Allway subfolder in the Applications folder that they will find in the root of their secure storage drive.